

Delphi

M · A · G · A · Z · I · N · E

The Delphi Magazine
iTec, 41 Recreation Road, Shortlands
BROMLEY, Kent BR2 0DY, United Kingdom
Tel/Fax: +44 (0)181 460 0650
Email: 70630.717@compuserve.com
World Wide Web:
<http://ourworld.compuserve.com/homepages/DelphiMagazine>

email Tamarack Associates on CompuServe 72365,46 or call +1 415 322 2827.

LightLib Magic Menus

DFL Software of Toronto, Canada, have released this new product which adds new swings and bells to the standard Windows menuing system. Menus can have background images, textures, bitmap menu buttons, tool button palettes and more. See the screenshot below for a taster! DFL are on Tel: +1 (416) 487 2660, Fax: +1 (416) 487 3656 or visit <http://www.dfl.com>.

JETset Links Delphi To Access

Following the loosening of the tight control on Microsoft's JET database engine more companies are producing solutions to allow Delphi developers to work directly with MS Access databases, without going through ODBC and the BDE. One such is Eagle Research, of San Francisco, USA, with their new JETset product.

Set to launch in June, JETset will have an introductory price of \$150 and no royalties. It will also be bundled free with Eagle's VB2D Visual Basic to Delphi translator, which costs \$450. For details call Marsha Stutsman on +1 (415) 495 3136, Fax +1 (415) 495 3638 or send email to sales@xeaglex.com.

News

Borland Acquires Open Environment Corporation

Borland recently announced it is to acquire Open Environment Corporation of Boston, MA, USA, for around \$64 million. This will add significant expertise and products in multi-tier scalable client/server and internet areas. Amongst the products which will be acquired are Entera, a framework for building, managing and deploying large scalable distributed solutions, Internet Launcher and AppMinder.

MK Query Builder

New from MK Organisation, Paris, France, is a query builder which allows you to build query by example into your Delphi applications. It comprises a VCL component and a DLL. Features include grouping, sorting, min/max/average values, filtering, export of results (in Excel, Paradox, dBase or ASCII format), saved queries (as internal or SQL format) and long field 'alias' names (so your users don't have to grapple with cryptic internal field names). For details contact your retailer, visit <http://www/mko.fr> or email CompuServe 100332,2217.

Client/Server Solution

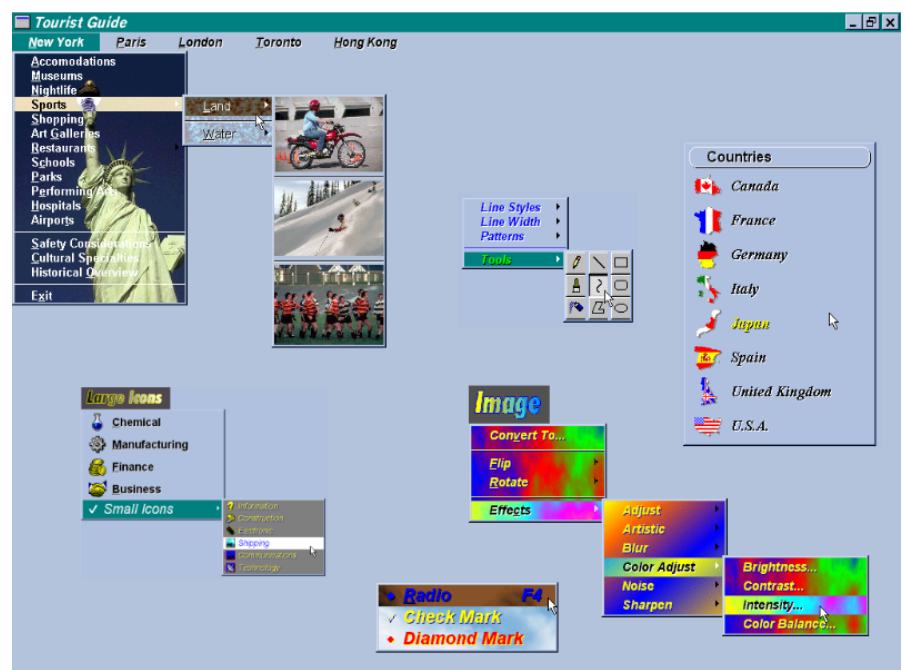
As many will know, Borland are packaging 5 client/server copies of Delphi 2 along with training and support to form a complete solution package. QA Training of

Cirencester, UK, have been working with Borland on the training element of the package. For details of current courses call QA on +44 (0)1285 655888 or Fax +44 (0)1285 650537.

TtaDBMRO 2.0

If you've struggled with the new TDBCtrGrid in Delphi 2 you will have wondered if there isn't an easier way... Well, there is: TtaDBMRO supports all the Delphi data aware controls (unlike the Borland control), is compatible with both Delphi 1 and 2 and it also works with InfoPower 1.2, Orpheus 2.0 and more 3rd party components. the cost is just US\$25. For details

► LightLib Magic Menus from DFL Software



TurboPower Upgrades

TurboPower Software of Colorado, USA, are now shipping Delphi 2 versions of key products. Orpheus 2.0 adds data-aware grid and array editor controls to its already astounding range of data-entry controls, at an upgrade price of \$59 (list price \$199). Async Professional 2.0 for Delphi adds fax components (convert to fax, send, receive, view and print faxes, etc) and Win95 TAPI support to the already well-known serial comms capabilities. SysTools 1.0 is a new collection of essential system-level routines for string manipulation, date/time, registry and INI file handling, huge arrays, BCD arithmetic and more.

Promised for this summer is FlashFiler 1.0, a drop-in replacement for TTable which supports transaction processing, huge BLOBs, multi-user operation, user-defined indexes etc. It supports all the Borland data-aware controls. It's fast, compact and you don't need to ship the (huge) BDE!

For details call TurboPower on +1 719 260 9136, Fax: +1 719 260 7151 or email order@tpower.com.

Irresistible Deals...

Well, that's what it says on this Press Release from QBS Software of London, UK! First of the deals is *The Killer*, at £149, a competitive upgrade from any other RAD system to Delphi 2, saving £150 in the process. *The Heavyweight* and *Lean and Mean* (can I have extra cheese and olives on these please?!) are based around five copies of Delphi 2 Client/Server, the first provides training, consultancy and support at £8,750, whilst the second is for the product only at £4,850 (saving an estimated £2,500).

For details call QBS on +44 (0)181 956 8000, Fax +44 (0)181 956 8010, email skye@qbss.co.uk or visit <http://www.qbss.com> before they regain their senses!

Helping Hand For Delphi 1 & 2

Keylink Computers have ported their help authoring tool from VB to Delphi. You store help text within the OnEnter event handlers of your application source code, in special comment blocks and

Helping Hand then extracts it and error checks it before the help file is generated as RTF or ASCII. For details call Keylink on +44 (0)1926 850909, Fax: +44 (0)1926 864128 or contact your tools retailer. The price is £149.95 plus VAT.

J-Write

This new component library, from MWA Software of Alresford, UK, gives your Delphi 1 and 2 applications the capability for fast, efficient editing of text files of any size. A shareware version is available from CompuServe's DELPHI forum or <http://www.demon.co.uk/mwa-soft> or fax Tony Whyman on +44 (0)1962 735581.

R&R Report Writer

Version 7 of the XBase Edition of this well known report writer is now available for Windows 95 and NT at £199 plus VAT or an upgrade price of £79. Call R&R Software on +44 (0)1628 687500 for details.

HyperAct Have Been Busy...

...developing new products! First off, NextHelp introduces HTML 2 viewing in Windows Help, with tables, popup windows, forms and CGI scripts. Cost is \$169. The current version supports Windows 3.1 and 95, a 32-bit version for Win95 and NT is coming soon.

Second is CyberTerp, a WinCGI script engine for Delphi, supporting the WinCGI standard interface. You can use CyberTerp to write scripts that process HTML form input, handle smart connections and more. The cost is \$69.

For details call HyperAct on +1 (515) 987 2910, fax: +1 (515) 987 2909 or visit their Web site at <http://www.hyperact.com> where product demos are available for free download.

New 32-bit MapTools

Geosoft Ltd, Leeds, UK has released MapServer 3/32, a re-usable component library for building digital mapping apps, geographical information systems etc. MapServer 3/32 offers vector and raster mapping with optimised display for accuracy and improved performance. Features include pan, zoom, point and query and editing of maps. Each map feature is represented as an object which has a unique identification number and a set of map data attributes in a database. You can import, tile and overlay multiple maps from a range of formats, including those from MapInfo, ESRI's Shapes, AutoCAD, Ordnance Survey (NTF), U.S. Geological Survey (DLG), AtlasGIS, .BMP and Digital Chart of the World (VPF).

MapServer 3/32 costs £795 plus VAT and postage. MapTools products are also available through a network of resellers in the UK headed by Bits Per Second Ltd of Brighton. For details contact: Chris Inie at Geosoft Ltd., Tel +44 (0)113 234 4000, Fax: +44 (0)113 246 5071, Email: c.d.inie@geosoft.co.uk or visit <http://www.geosoft.co.uk>

Information Please!

If your company has products or services which are relevant to Delphi developers rest assured we want to hear about them! Our deadline for news is about the 8th day of the month preceding the cover date, but the earlier the better of course. Send your information for the attention of the Editor, by email if possible, to:

70630.717@compuserve.com

or failing that by fax to:

+44 181 460 0650

or by snail mail if you really must!

Delphi Bug List

Reinier Sterkenburg has now taken over maintenance of this list, which can be found at:

<http://www.dataweb.nl/~r.p.sterkenburg/bugsall.htm>

Many developers worldwide have contributed to the list, which is being continually updated and contains a large number of Delphi 2 'undocumented features' [*I'm in a kind mood! Editor*]. Workarounds and helps are also included. To submit information send email to Reinier at:

r.p.sterkenburg@dataweb.nl